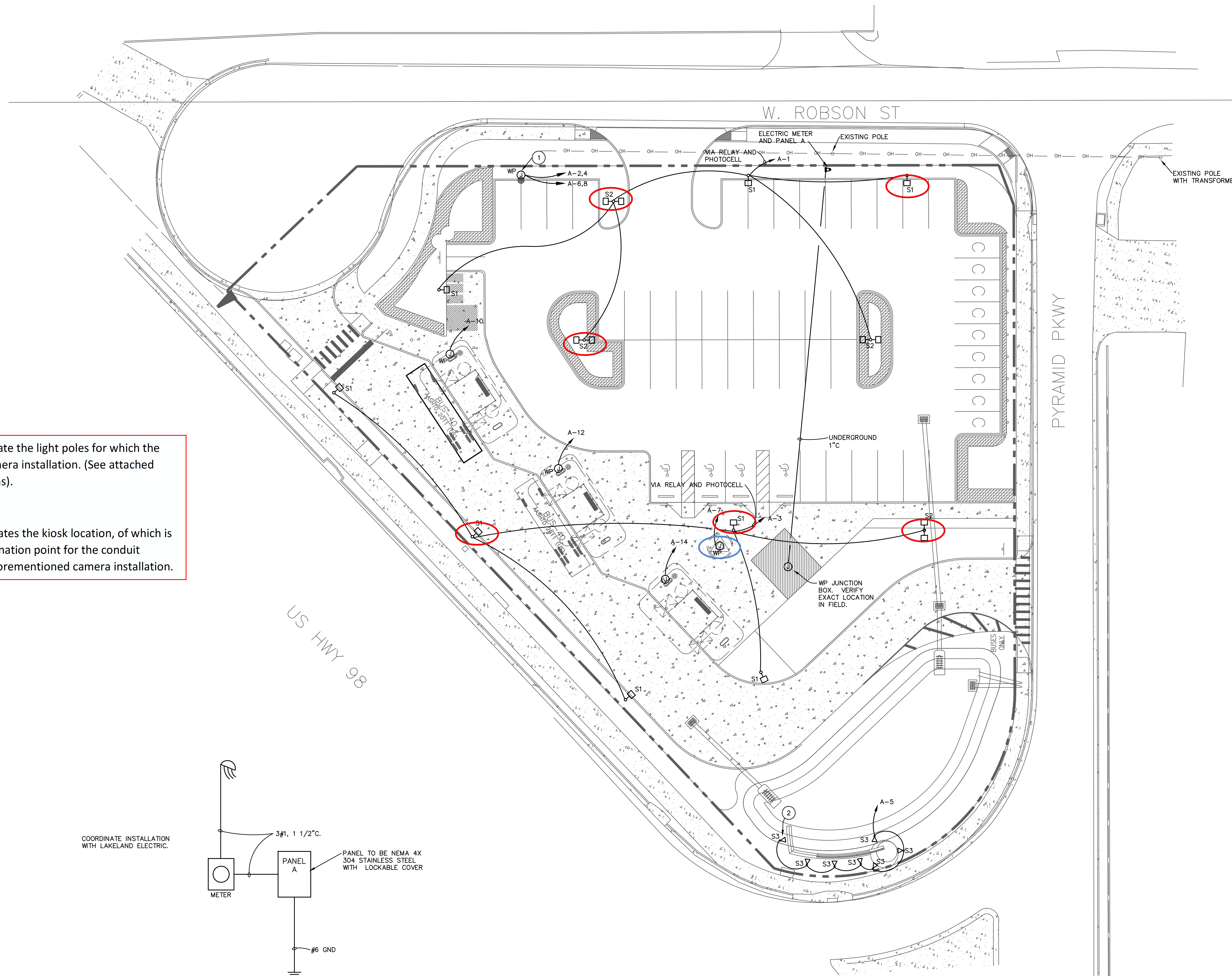


KEYED NOTES:

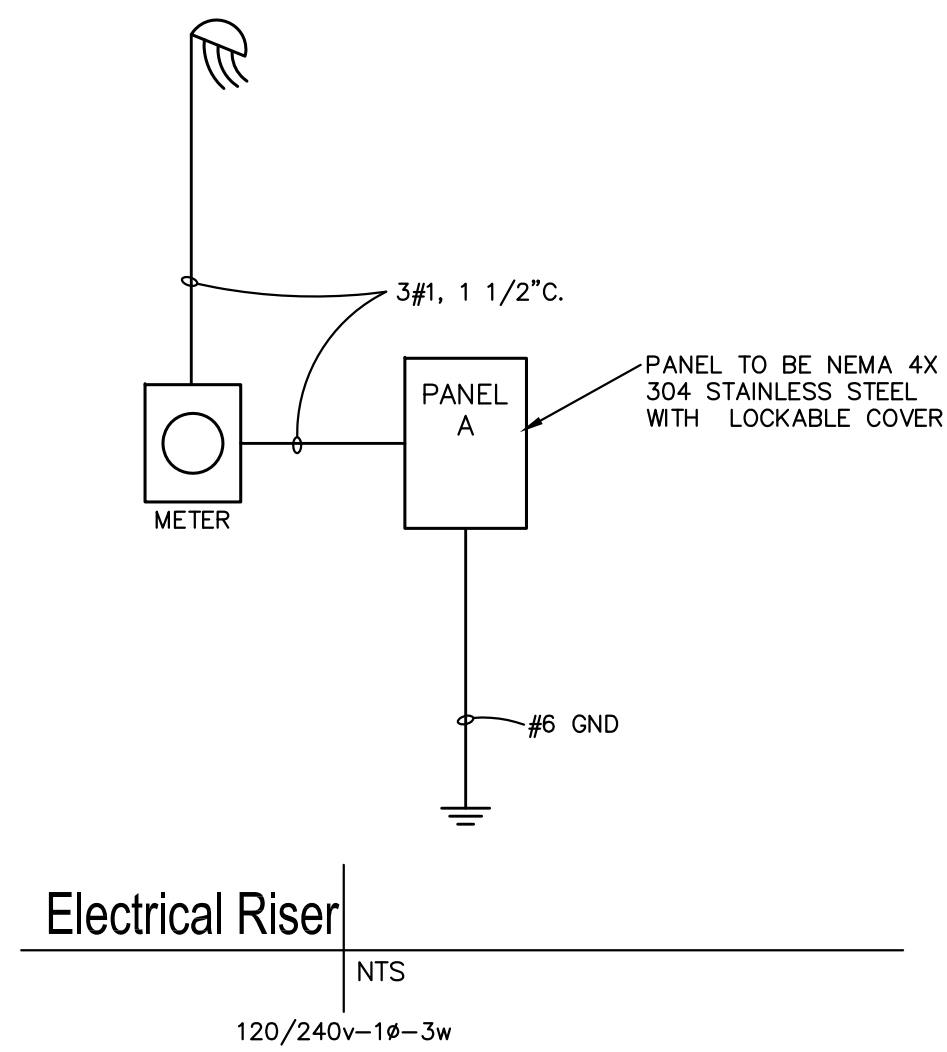
- 1 POWER CONNECTION FOR DUAL CHARGING STATION. COORDINATE INSTALLATION AND POWER CONNECTION WITH MANUFACTURER.
- 2 CENTERLINE OF FIXTURE BASE SHALL BE MOUNTED 6'-0" FROM CENTERLINE OF SIGN BASE. AIM FIXTURES AT NIGHT AS DIRECTED BY ARCHITECT.

The **red** circles indicate the light poles for which the District requires camera installation. (See attached camera specifications).

The **blue** circle indicates the kiosk location, of which is the suggested termination point for the conduit necessary for the aforementioned camera installation.



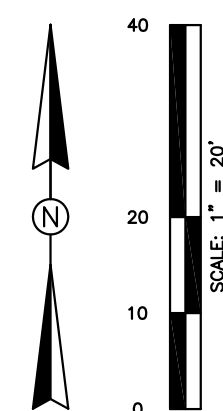
COORDINATE INSTALLATION WITH LAKELAND ELECTRIC.



Electrical Site Plan

1"=20'-0"

0 10' 20'



LAMTD Park & Ride

3295 Highway 98 North
Lakeland, Florida 33805

Electrical Site Plan

ISSUED FOR CONSTRUCTION: 11.25.14
ISSUED FOR PERMIT: 02.28.14
ISSUED FOR BID: 02.28.14
ISSUED FOR 50% REVIEW: 02.07.14

DRAWN BY: AD/FP
REVIEW BY: MES

LUNZ PREBOR FOWLER ARCHITECTS
COPYRIGHT 2014 ALL RIGHTS RESERVED

1321.01