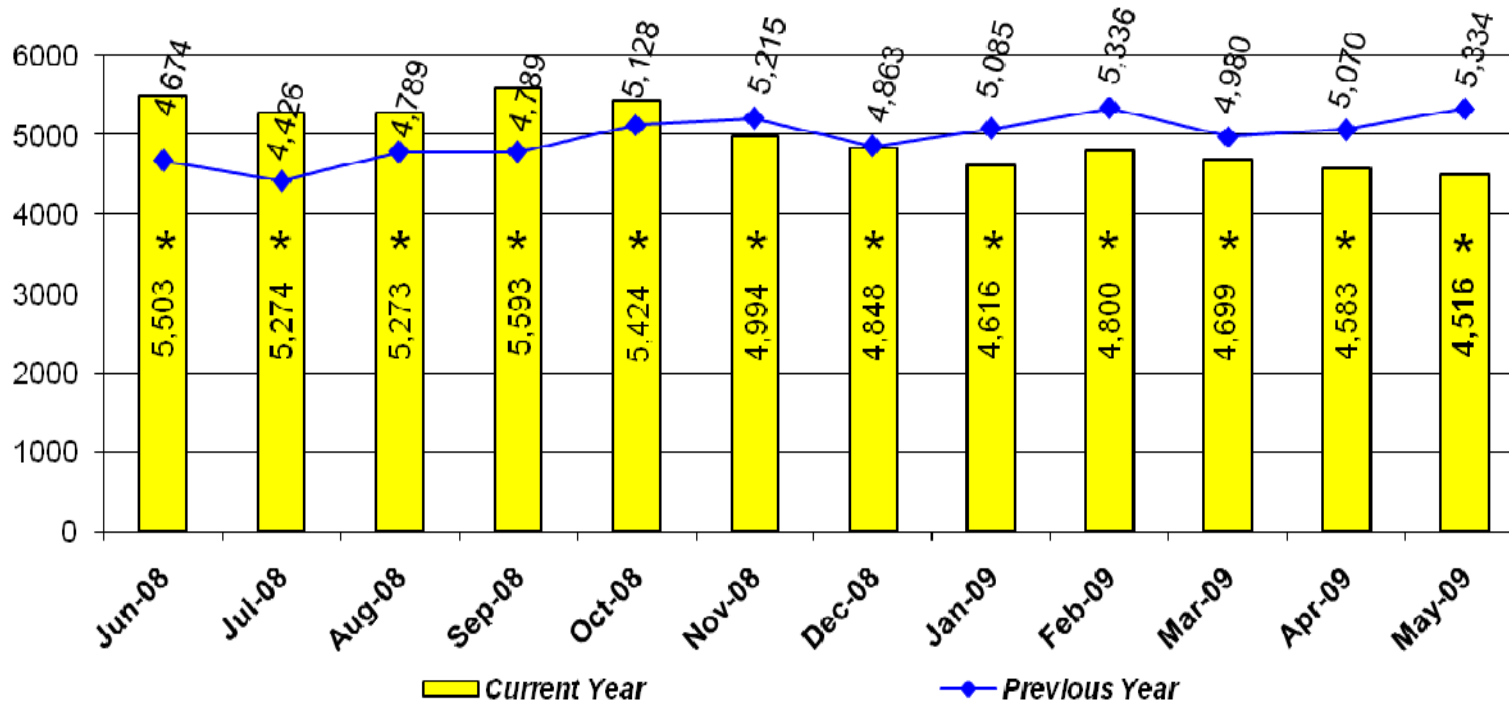
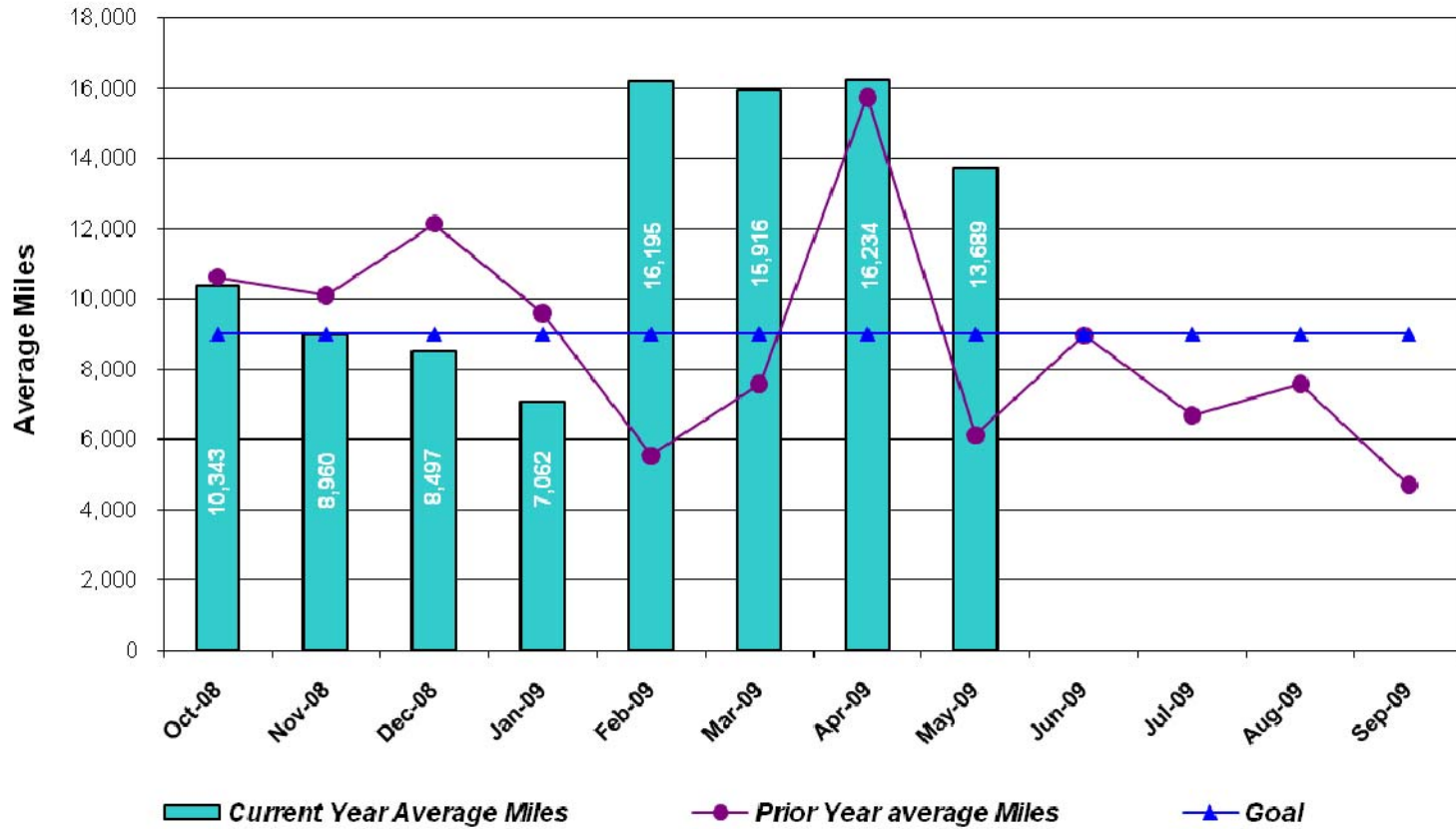


LAKELAND FIXED ROUTE RIDERSHIP FY 07-09



*Comparison between average passenger trips per day, April 2007-April 2008, is less reliable than comparison going forward from May 2008. In May 2007 Operators made the change from manual paper and pencil counts to electronic keying using the GFI farebox to key all boardings.

AVERAGE MILES BETWEEN ROAD CALLS FY 08-09



ACCIDENTS FY 07-09

