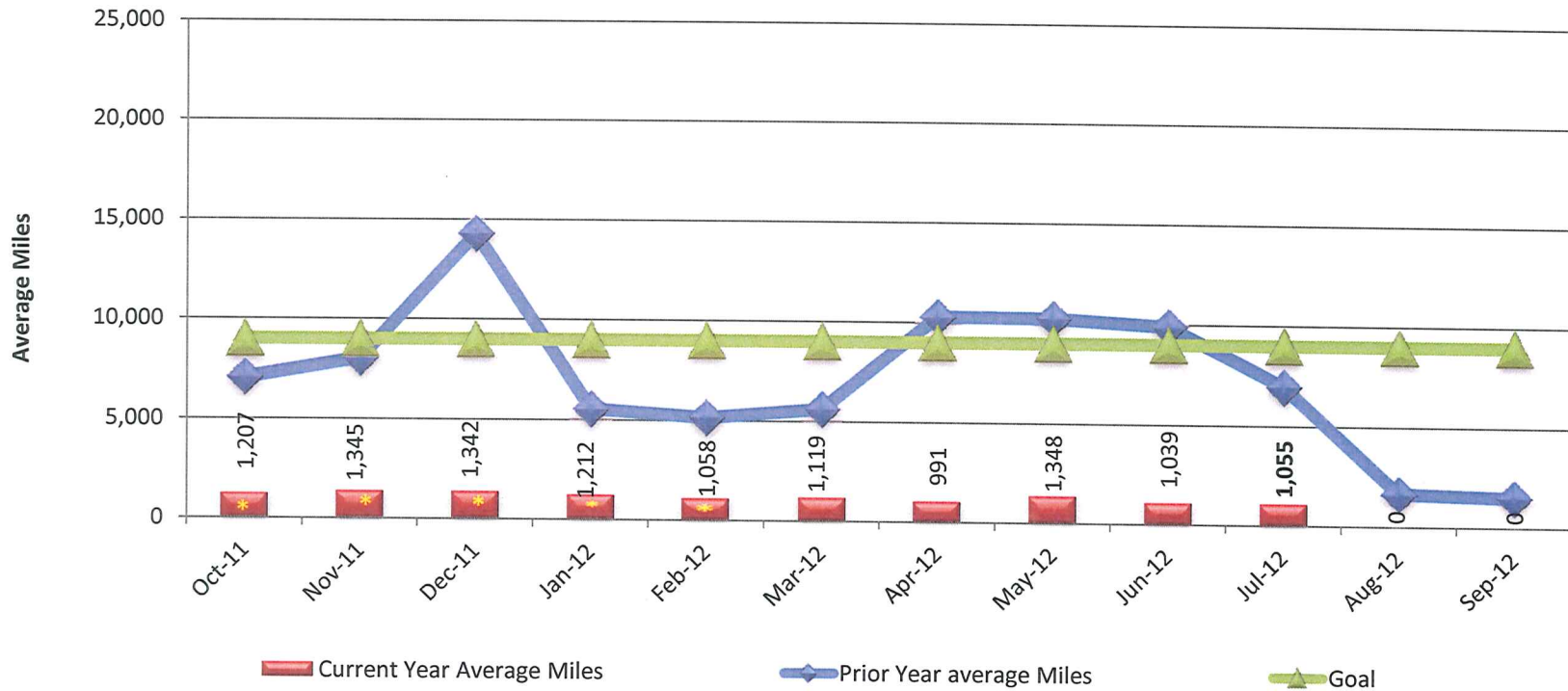
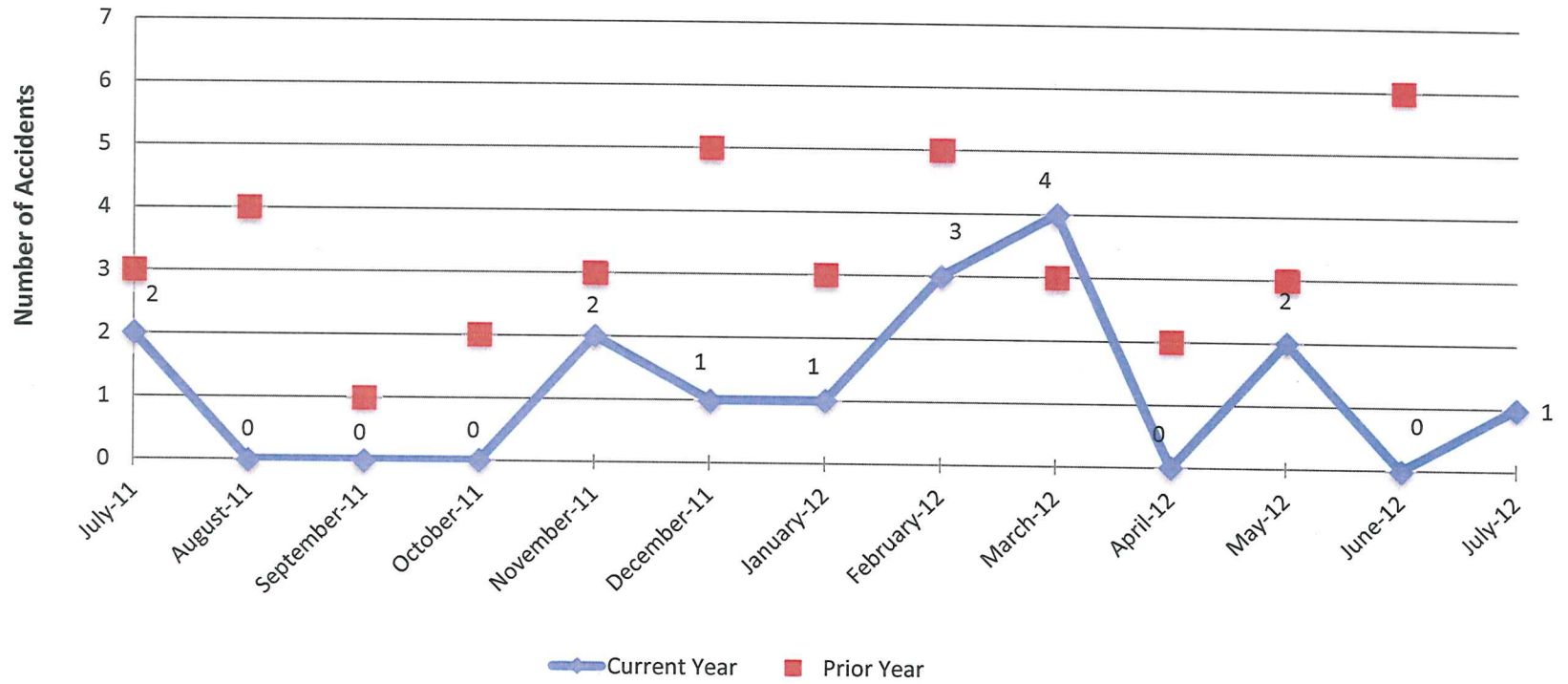


AVERAGE MILES BETWEEN ROAD CALLS FY 10-11

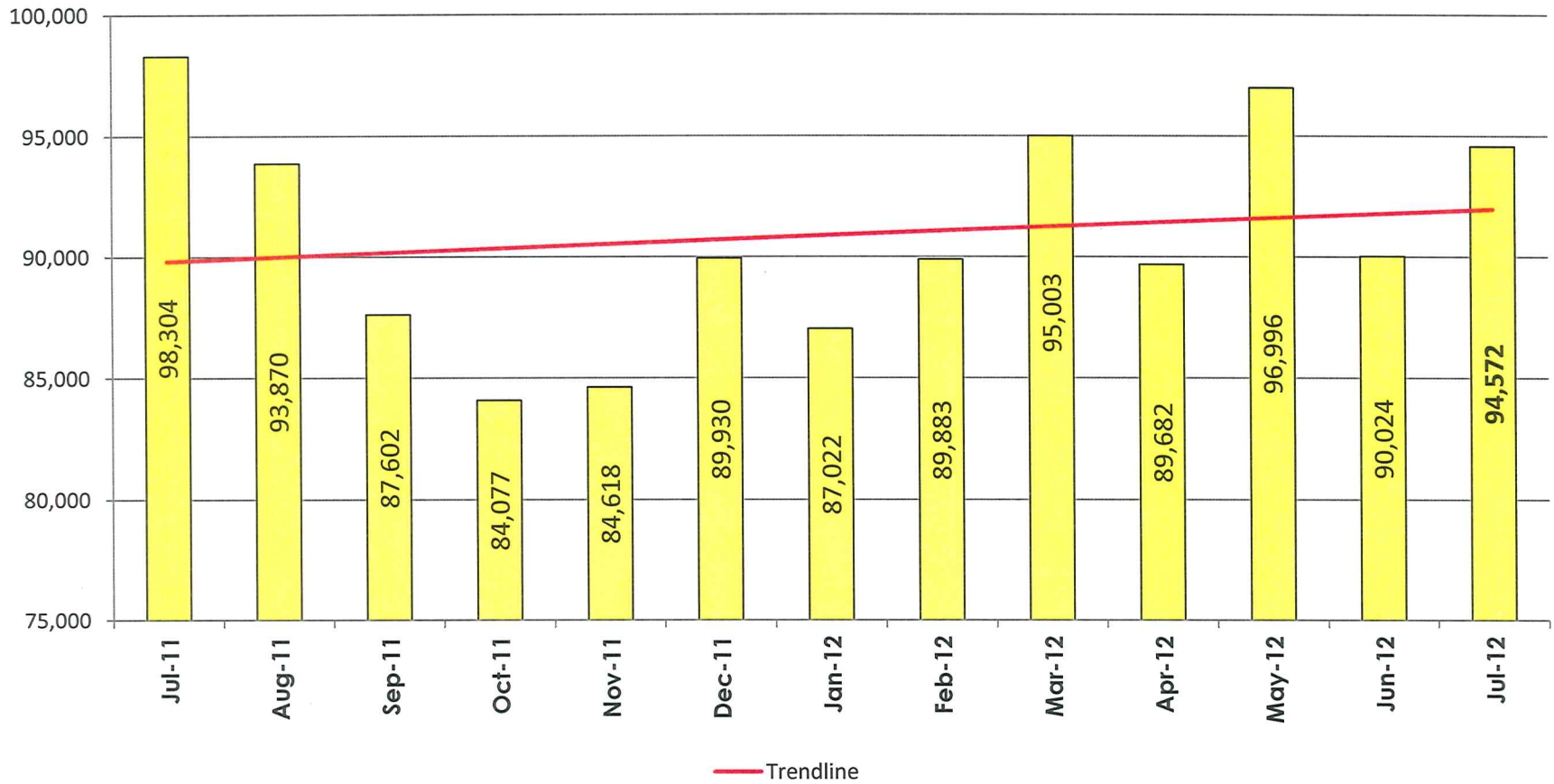


* Calculation of road miles was changed as of October 2009. Mileage is based on Revenue Vehicles (Fixed Route and Paratransit) only. Service vehicle mileage had previously been added to the total mileage.

Preventable Accidents FY 11-12



LAKELAND FIXED ROUTE MONTHLY RIDERSHIP FY11-12



LAKELAND FIXED ROUTE RIDERSHIP FY11-12

